

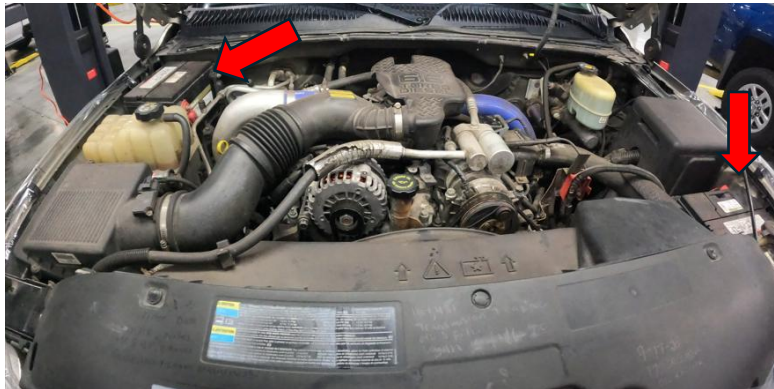


2001-2004 LB7 Duramax Stage 2 4" Intake & Intake Horn

Covers installation of PN: WCF100300



1. Disconnect both battery terminals before beginning install.



2. Disconnect MAF sensor from OEM intake.



3. Remove factory upper and lower airbox from engine bay. A flathead screw driver can be used to remove clamps and then pull up and remove in one piece once clamps are off.



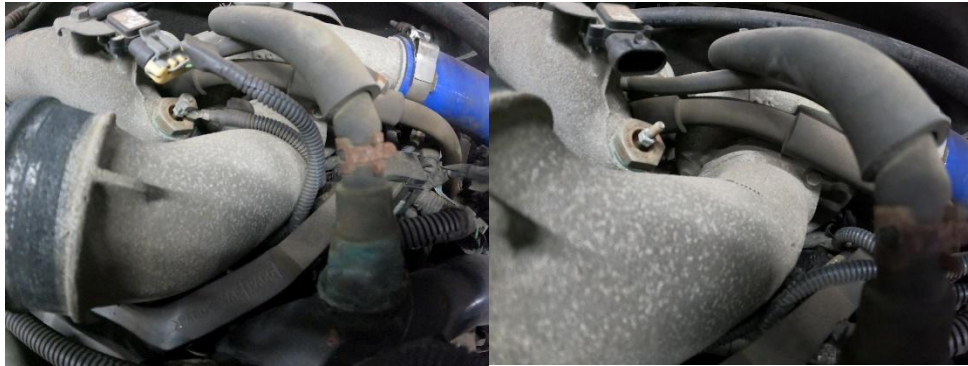
4. Remove the resonator box from the top of the engine by removing screw at back connection and clamp to intake.



5. Remove intake pipe from intake horn by loosening clamp connection.



6. Remove MAP connector and alternator wiring for better access to intake horn bolts.



7. Remove all three 10mm bolts from intake horn and carefully clean gasket from turbo face.



8. Install two lower bolts from supplied hardware.



9. Some Dr Tranny's Assemblee Goo (example below) can be used to hold o-ring in place on intake horn. Assemblee Goo can be found online or at local auto parts store.



10. Remove upper wire harness cover using flat blade tool.



11. Remove lower track and discard if broken.



12. Tape harness to assist with install of wire loom.



13. Cut tape on alternator harness to MAP sensor.



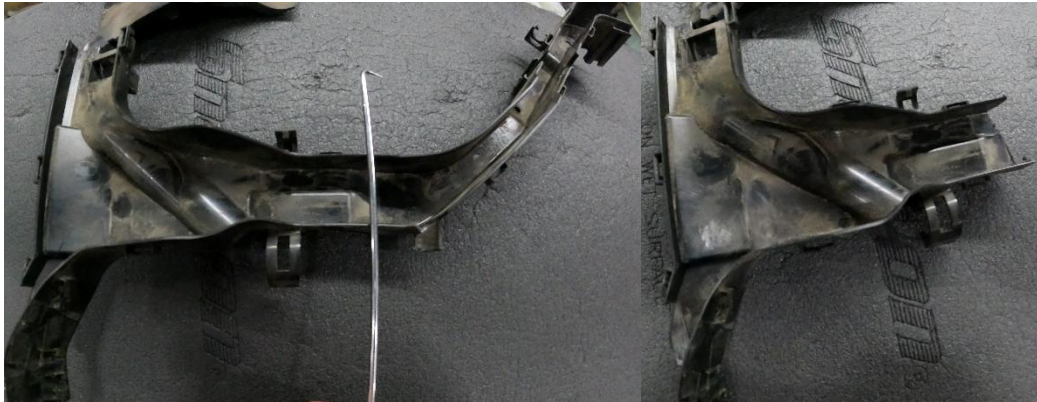
14. Install intake horn on two lower bolts installed previously.



15. Thread in the third bolt and tighten them all down to secure horn to turbo face.



16. If wire track is in good condition, make cuts as shown below and install back in place.



17. If wire track is broken, tape and install loom in shown location.



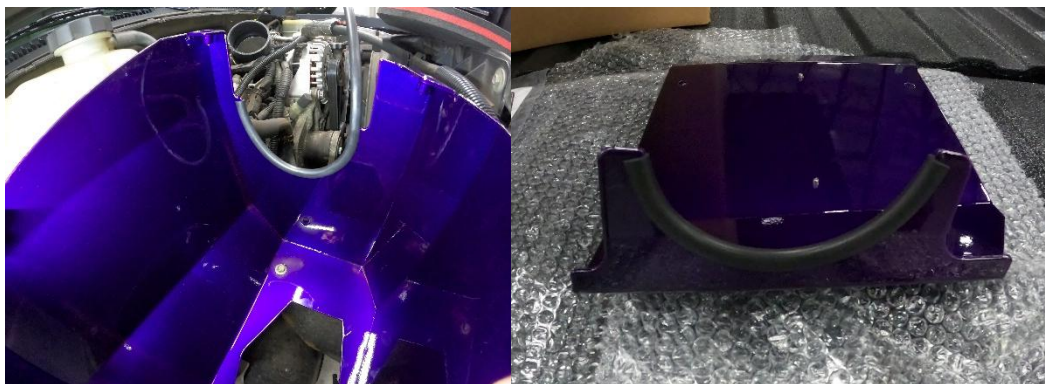
18. Install boot and clamps loosely on intake horn.



19. Install lower airbox using hardware from OEM airbox



20. Install rubber edge seal to upper & lower section and cut to correct length around intake pipe.



21. Install outerwear cover on air filter, then install filter on intake pipe 2” in from beadroll and tighten clamp



22. Reinstall MAF sensor into new intake pipe (arrow on bung points in airflow direction to turbo) and reconnect wire harness to it.



23. Install intake pipe into boot on intake horn and fully tighten clamps past the bead rolls.



24. Install lid with 4 provided screws.



25. Reconnect battery cables and start truck and check for any leaks after some idle time.

Maintenance: Your new air filter is a high quality replaceable dry media filter (WCF100717) built to our specifications. We recommended OEM scheduled maintenance intervals with regular inspection. This air filter assembly is not washable, but maintenance intervals may be extended by using compressed air from the inside of the filter to blow out dirt. Once filter is dirty to the point of beginning to collapse it is time to replace. Outerwear pre-filter cover may be removed and washed with warm water & dish soap solution and allowed to air dry before re-installation.

Any Questions, Comments, or Feedback?

Reach us by Email - Sales@wcfab.com

Or the shop phone - 630-277-8239

Thank you for purchasing from Wehrli Custom Fabrication!