



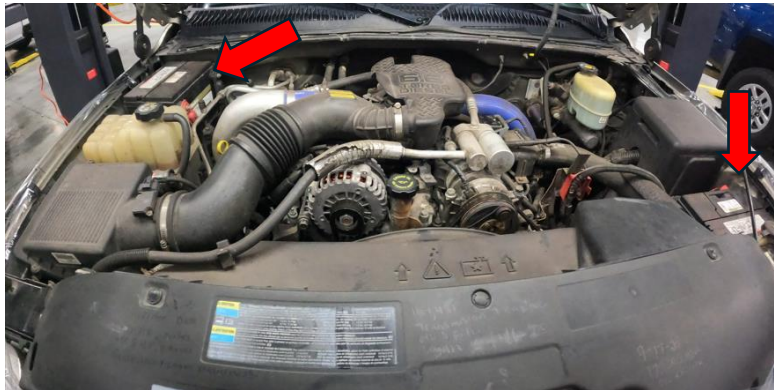
2001-2004 LB7 Duramax 4" Intake Horn

Covers installation of PN: WCF100535

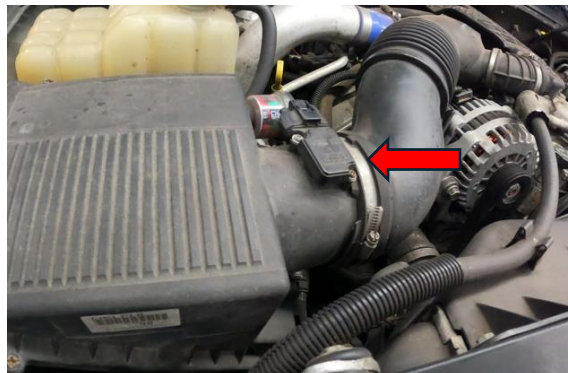


NOTE: WCFab Intake horn is not compatible with OEM intake.

1. Disconnect both battery terminals before beginning install.



2. Disconnect MAF sensor from OEM intake.



3. Remove factory upper and lower airbox from engine bay. A flathead screw driver can be used to remove clamps and then pull up and remove in one piece once clamps are off.



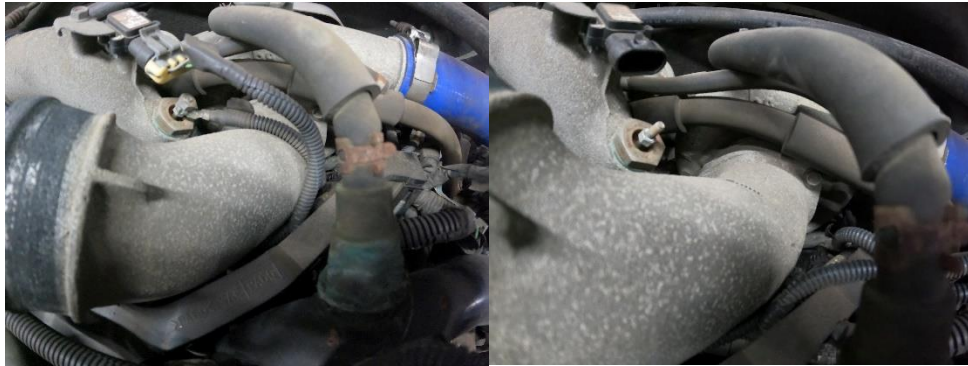
4. Remove the resonator box from the top of the engine by removing screw at back connection and clamp to intake.



5. Remove intake pipe from intake horn by loosening clamp connection.



6. Remove MAP connector and alternator wiring for better access to intake horn bolts.



7. Remove all three 10mm bolts from intake horn and carefully clean gasket from turbo face.



8. Install two lower bolts from supplied hardware.



9. Some Dr Tranny's Assemblee Goo (example below) can be used to hold o-ring in place on intake horn. Assemblee Goo can be found online or at local auto parts store.



10. Remove upper wire harness cover using flat blade tool.



11. Remove lower track and discard if broken.



12. Tape harness to assist with wire loom install. This will allow room for fitment with horn.



13. Cut tape on alternator harness to MAP sensor.



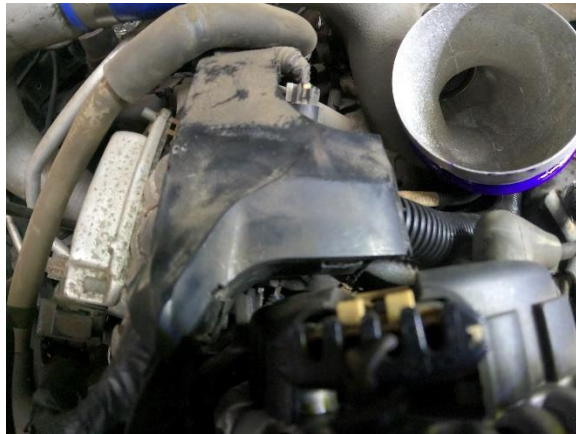
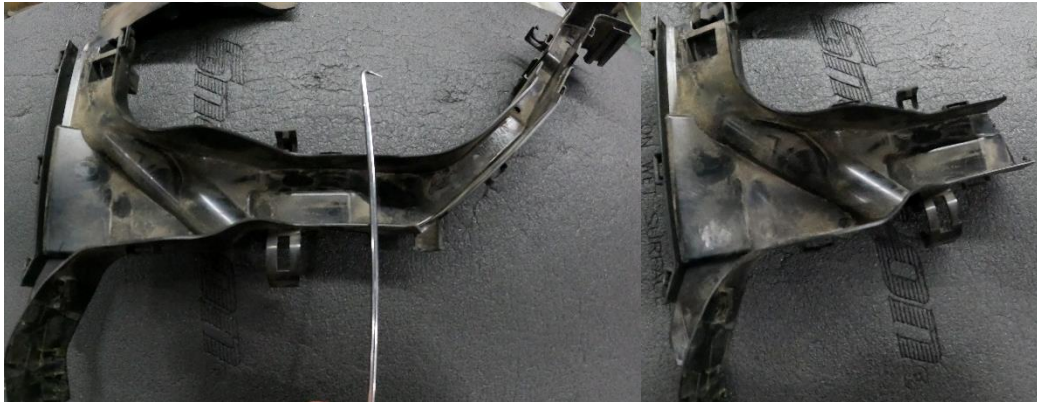
14. Install intake horn on two lower bolts installed previously.



15. Thread in the third bolt and tighten them all down to secure horn to turbo face.



16. If wire track is in good condition, make cuts as shown below and install back in place.



17. If wire track is broken, tape and install loom in shown location.



18. Install boot and clamps loosely on intake horn.



19. At this point you can reinstall your compatible aftermarket intake set up in reverse order that it came off and tighten clamps on intake horn boot.

20. Reconnect battery cables and start truck and check for any leaks after some idle time.

Maintenance: Your new air filter is a high quality replaceable dry media filter (WCF100717) built to our specifications. We recommended OEM scheduled maintenance intervals with regular inspection. This air filter assembly is not washable, but maintenance intervals may be extended by using compressed air from the inside of the filter to blow out dirt. Once filter is dirty to the point of beginning to collapse it is time to replace. Outerwears pre-filter cover may be removed and washed with warm water & dish soap solution and allowed to air dry before re-installation.

Any Questions, Comments, or Feedback?

Reach us by Email - Sales@wcfab.com

Or the shop phone - 630-277-8239

Thank you for purchasing from Wehrli Custom Fabrication!